

Thermo-Trex® Heat Trace Assembly

- Freeze Protection from -40°F (-40°C)
- Heater Output at 32°F (0°C); 5 Watts/Ft
- 120 V
- Low Temp Process Maintenance up to 150°F (66°C)

The Thermo-Trex® Heat Trace Assembly consists of a self-regulating heating cable, power cord and a National Electrical Manufacturers Association (NEMA) connection. Specifically designed for freeze protection of metal pipes, plastic pipes and valves, this assembly is suitable for indoor as well as outdoor use. Installing our heat trace assembly is simple; secure the assembly to the pipe or valve with adhesive tape, cover with *insulation and plug it in. Our plug-and-play heat trace assembly will automatically adjust the heat output based on the surface and ambient temperature. Built for extreme cold temperatures, the Thermo-Trex® Heat Trace Assembly offers freeze protection down to -40°F (-40°C).



FEATURES & BENEFITS

- 1. AUTO ADJUSTED HEAT OUTPUT** – Heat output automatically adjusts based on surface and ambient temperature. Temperature controller is not required.
- 2. SAFE FOR METAL AND PLASTIC** – Safe for use on metal and plastic pipes and valves.
- 3. EASY TO INSTALL** – Pre-assembled power plug and cord provides ease of use and installation.
- 4. SMART PART NUMBERING** – The Smart Part Numbering System can be used to create a custom length fit to your needs.
- 5. REUSABLE** – The heat trace assembly can be used year after year.

APPLICATIONS

- Indoor Pipes & Valves at Risk for Freeze
- Outdoor Pipes & Valves at Risk for Freeze
- De-Icing/Thawing Plastic Pipes & Valves
- De-Icing/Thawing Metal Pipes & Valves

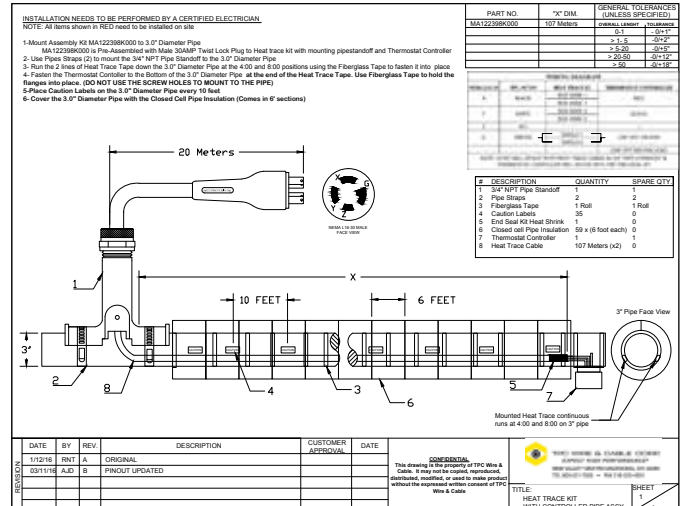
ADDITIONAL INFORMATION

- May be used on metal and plastic pipes and valves, but not to be used on flexible vinyl tubing (such as garden hoses).
- Not intended for use *inside* any pipes.
- Not intended for freeze protection of liquids other than water or for use in classified hazardous locations.
- Do not use on pipes that may exceed 150°F (65°C).
- Install only in accessible locations; do not install behind walls or through floors or ceilings where the cable would be hidden.

NOTE: *Entire installation must be covered with 1/2" or 3/4" fiberglass insulation or equivalent. For pipes with a diameter of less than 2", use 1/2" insulation & pipes with a diameter of 3", use 3/4" insulation.



Please contact your TPC Sales Representative or call us at 800-521-7935 for more information.



Quick-Connects™ Mini
Quick-Connects™ Micro
Quick-Connects™ Nano
Specialty Quick-Connects™
Ethernet Cable Assemblies
7 Pin Molded Valve Plug
DIN Connectors
Extension Cords
M23 Connector Assemblies
Military Connectors
Rectangular Connectors